

**EZ ENTRY**®

5299 ENTERPRISE DRIVE  
LOCKPORT, NY 14094  
PH. (716) 434-3440  
FAX. (716) 434-7770

PROJECT:

LOCATION:

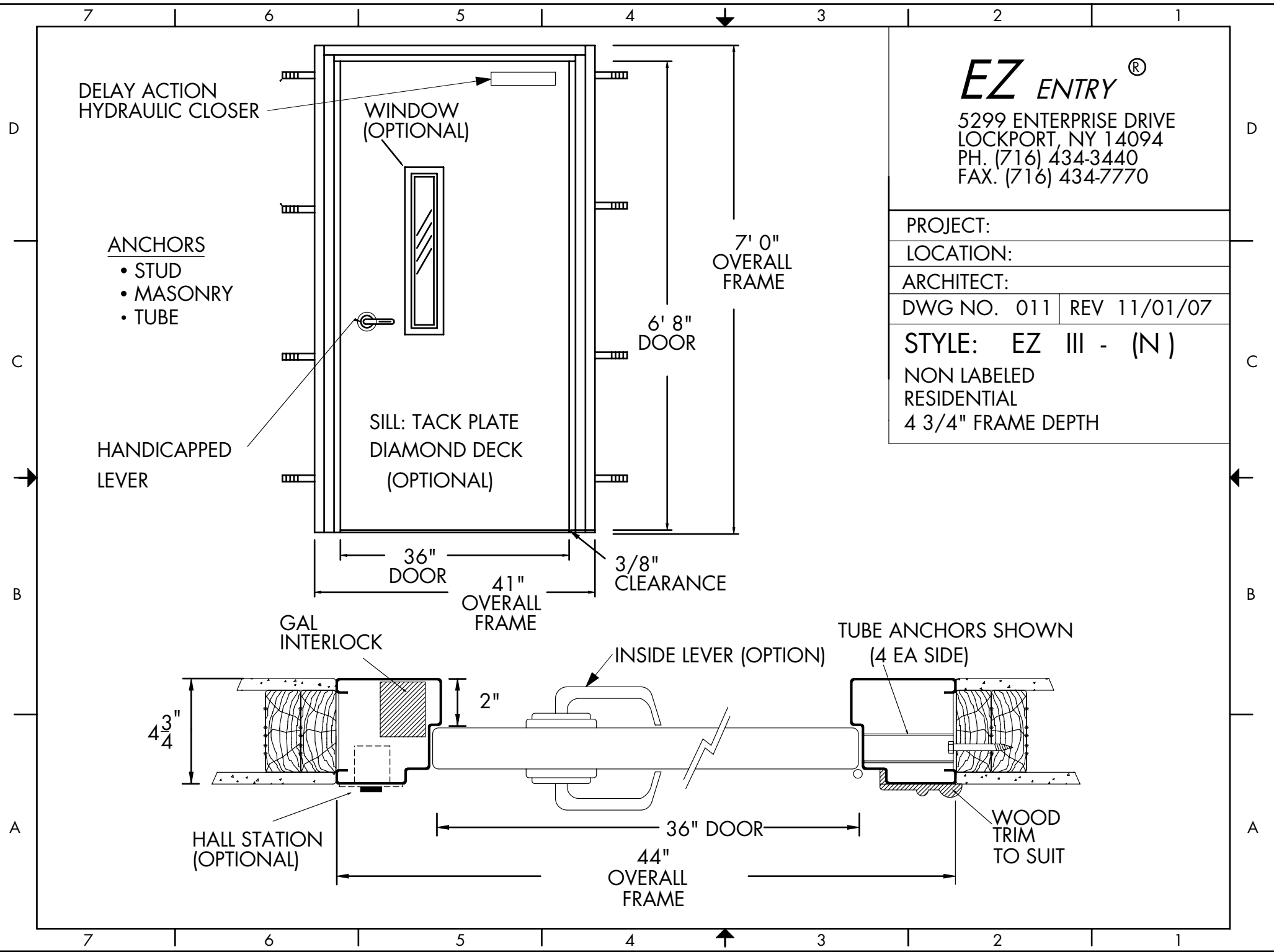
ARCHITECT:

DWG NO. 011 | REV 11/01/07

STYLE: EZ III - (N)

NON LABELED  
RESIDENTIAL

4 3/4" FRAME DEPTH



USER REVD/DATE FNAME